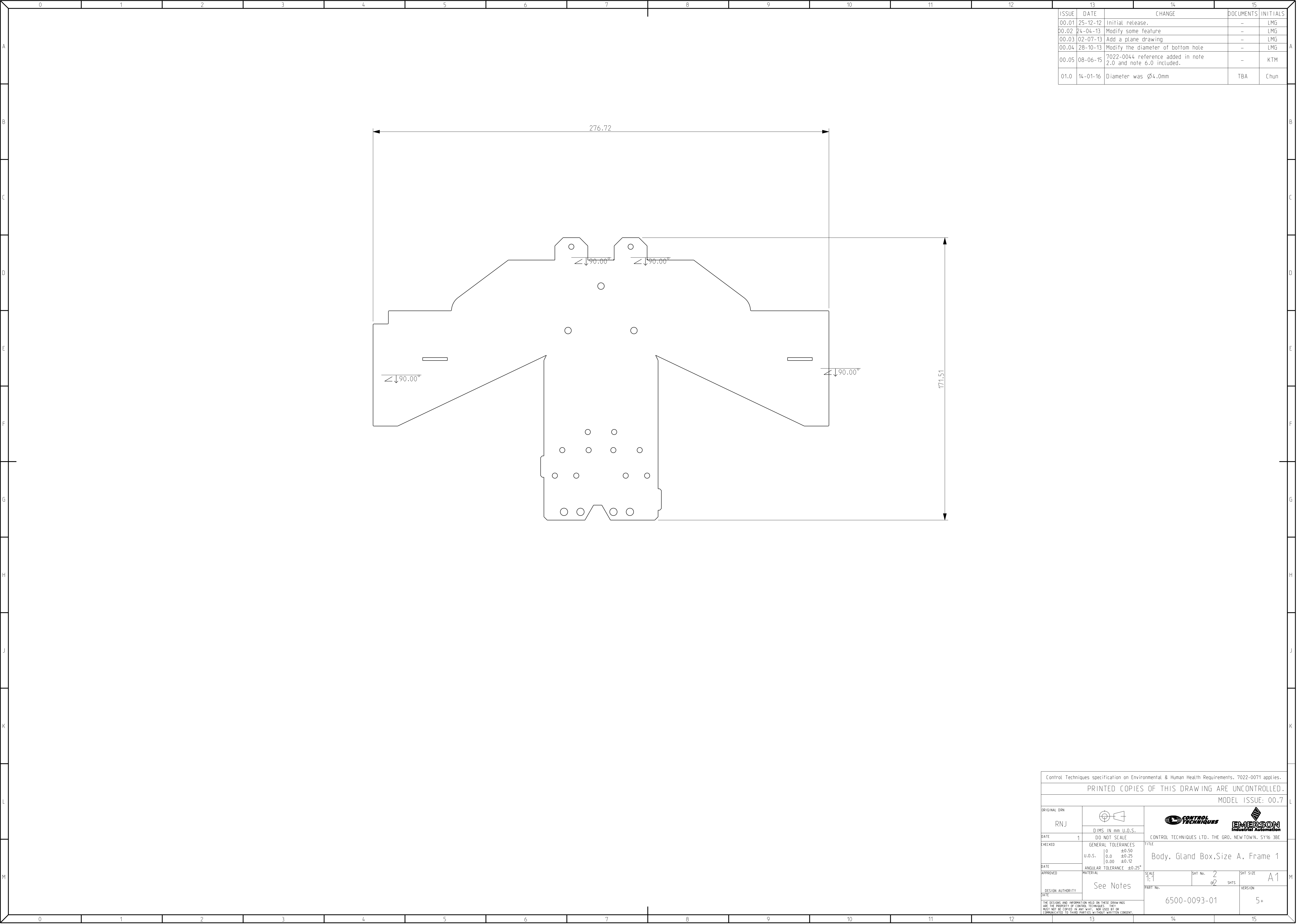


NOTES:-

- This drawing is to be read in conjunction with the 3D CAD file 6500-0093
- 1.0 MATERIAL:  
LOW CARBON STEEL: GRADE DC01 TO BS EN 10130
- 2.0 FINISH:  
Refer latest 7022-0044 CT standard for Zinc electroplating and corrosion resistance requirements.
- 3.0 PRECEDENCE DIMENSIONAL CONTROL:  
DIMENSIONS AND DATUMS GIVEN HERE ARE FOR INSPECTION PURPOSES ONLY. DRAWING MUST BE READ IN CONJUNCTION WITH PRO/ENGINEER FILE:- 6500-0093\_BODY\_CBL-METAL-A\_ OR APPROVED ALTERNATIVE 3D FORMAT.
- 4.0 NO SHARP EDGES OR BURRS PERMISSIBLE.
- 5.0 PARTS TO BE SUPPLIED CLEAN AND FREE FROM ANY FOREIGN OBJECTS.
- 6.0 PART/TOOLING QUALIFICATION:  
Refer latest 7022-0025 CT terms and conditions for metal components.

|  |                          |   |          |
|--|--------------------------|---|----------|
| Control Techniques specification on Environmental & Human Health Requirements. 7022-0071 applies.  |                          |   |          |
| PRINTED COPIES OF THIS DRAWING ARE UNCONTROLLED.   |                          |   |          |
| MODEL ISSUE: 00.7  |                          |   |          |
| ORIGINAL DRN   |                          |   |          |
| RNJ  |                          |   |          |
| DATE   | DO NOT SCALE             | CONTROL TECHNIQUES LTD. THE GRO. NEW TOWN, SY16 3BE |          |
| CHECKED  | GENERAL TOLERANCES       | TITLE   |          |
|  | 0 ±0.50                  | Body, Gland Box, Size A, Frame 1                    |          |
|  | U.O.S. 0.0 ±0.25         |   |          |
|  | 0.00 ±0.12               |   |          |
| DATE   | ANGULAR TOLERANCE ±0.25° | SCALE   | SHT SIZE |
| APPROVED   | MATERIAL                 | 1:1   | A1       |
| DESIGN AUTHORITY   | See Notes                | PART No.  | VERSION  |
| DATE   |                          | 6500-0093-01  | 5+       |
| THE DECISIONS AND INFORMATION HELD ON THESE DRAWINGS ARE THE PROPERTY OF CONTROL TECHNIQUES. THEY MUST NOT BE REPRODUCED IN ANY WAY, NOR USED BY OR COMMUNICATED TO THIRD PARTIES WITHOUT WRITTEN CONSENT. |                          |   |          |



| ISSUE | DATE     | CHANGE   | DOCUMENTS | INITIALS |
|-------|----------|--|-----------|----------|
| 00.01 | 25-12-12 | Initial release.   | -         | LMG      |
| 00.02 | 24-04-13 | Modify some feature  | -         | LMG      |
| 00.03 | 02-07-13 | Add a plane drawing  | -         | LMG      |
| 00.04 | 28-10-13 | Modify the diameter of bottom hole                           | -         | LMG      |
| 00.05 | 08-06-15 | 7022-0044 reference added in note 2.0 and note 6.0 included. | -         | KTM      |
| 01.0  | 14-01-16 | Diameter was Ø4.0mm  | TBA       | Chun     |

|  |   |   |                     |             |
|--|---|---|---------------------|-------------|
| Control Techniques specification on Environmental & Human Health Requirements. 7022-0071 applies.  |   |   |                     |             |
| PRINTED COPIES OF THIS DRAWING ARE UNCONTROLLED.   |   |   |                     |             |
| MODEL ISSUE: 00.7  |   |   |                     |             |
| ORIGINAL DRN   |   | <br>  |                     |             |
| RNJ  |   |   |                     |             |
| DATE   | 1   | CONTROL TECHNIQUES LTD. THE GRO. NEW TOWN, SY16 3BE |                     |             |
| CHECKED  | GENERAL TOLERANCES<br>0 ±0.50<br>U.O.S. 0.0 ±0.25<br>0.00 ±0.12 | TITLE<br>Body, Gland Box,Size A, Frame 1            |                     |             |
| DATE   |   |   |                     |             |
| APPROVED   |   |   |                     |             |
| MATERIAL   | ANGULAR TOLERANCE ±0.25*  | SCALE 1:1   | SHT No. 2 of 2 SHTS | SHT SIZE A1 |
| DESIGN AUTHORITY   | See Notes   | PART No.  | 6500-0093-01        | VERSION 5*  |
| DATE   |   |   |                     |             |
| THE DESIGNS AND INFORMATION HELD ON THESE DRAWINGS ARE THE PROPERTY OF CONTROL TECHNIQUES. THEY MUST NOT BE COPIED IN ANY WAY, NOR USED BY OR COMMUNICATED TO THIRD PARTIES WITHOUT WRITTEN CONSENT. |   |   |                     |             |